

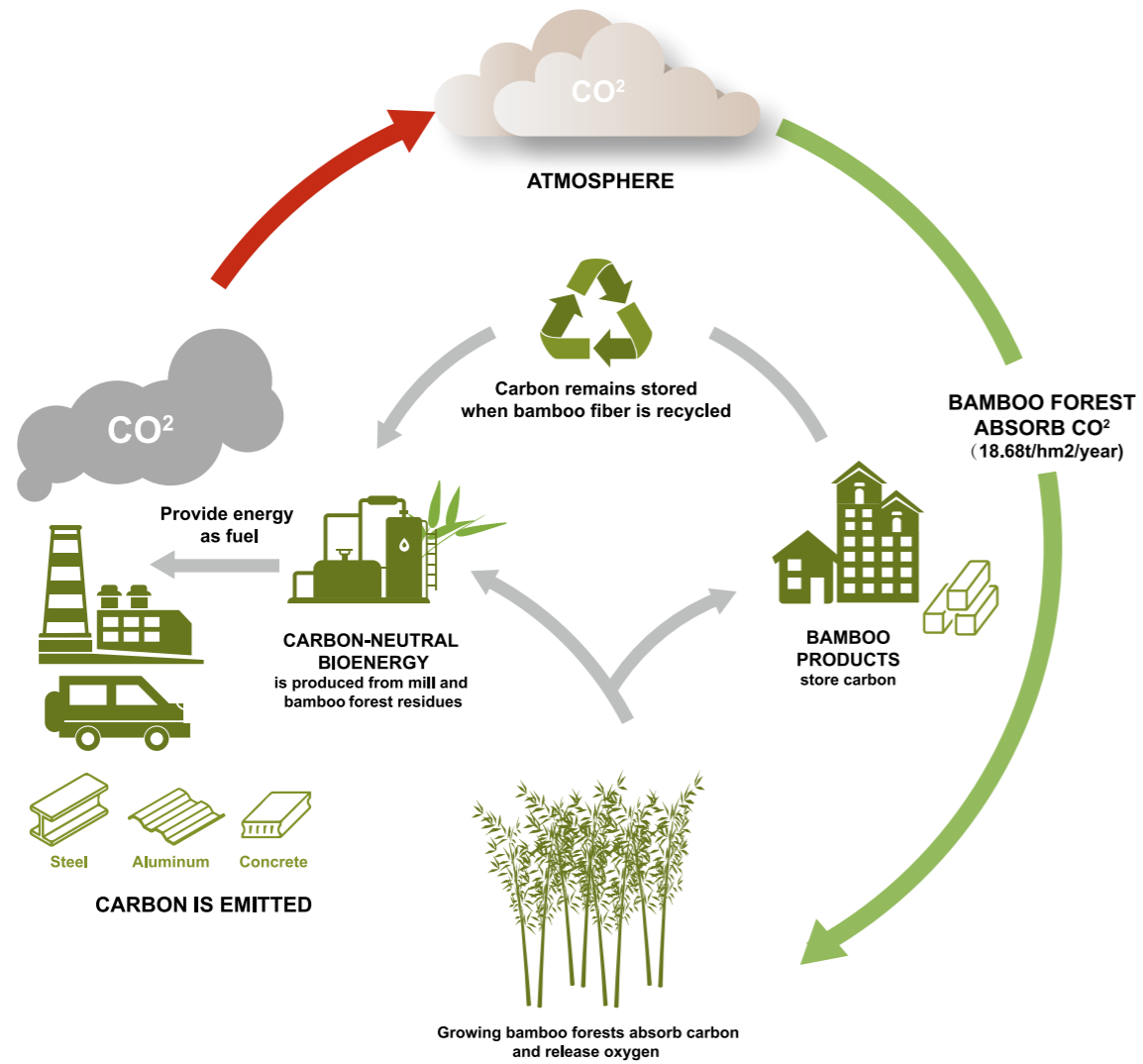


GREEN · BAMBOO · DASSO

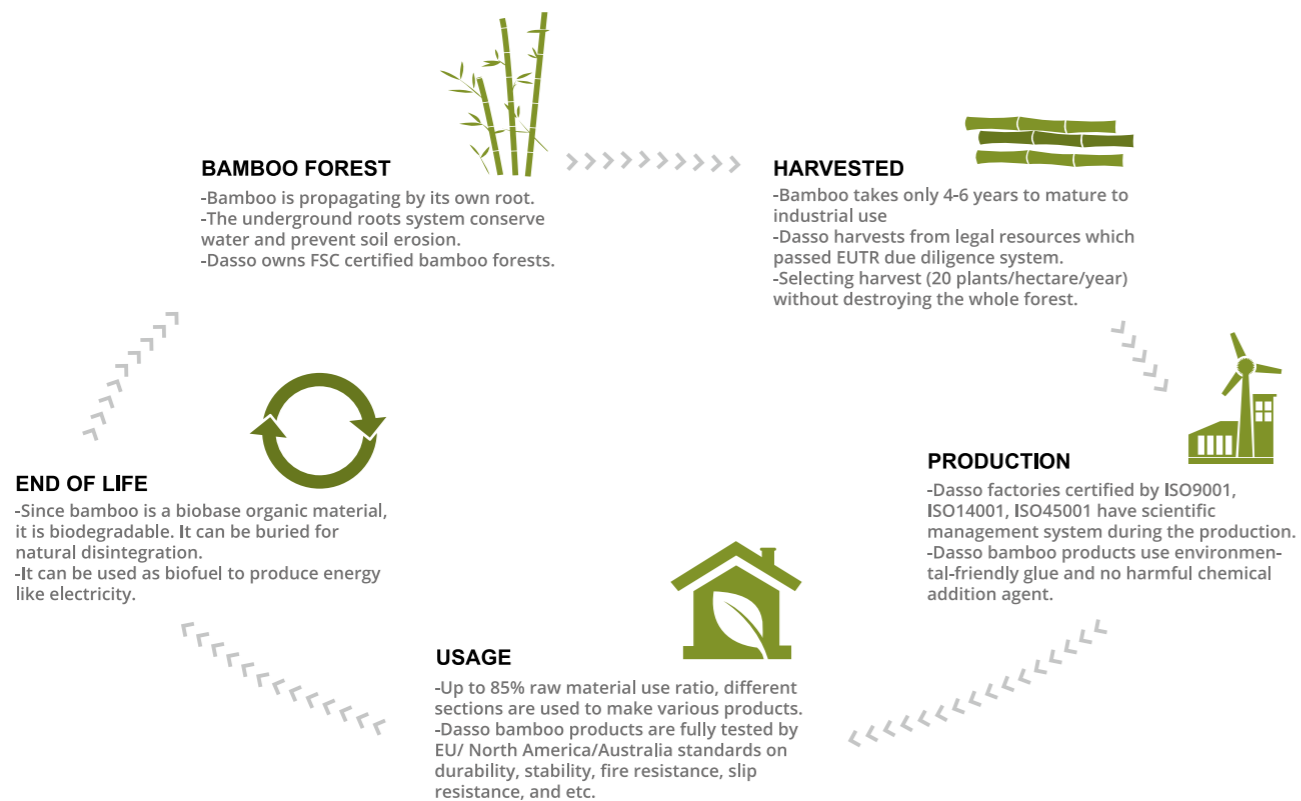


We are facing a significant global warming and rapid depletion of resources. It is our duty and responsibility to choose green and renewable resources and reduce carbon emissions.

BAMBOO FOREST CONTRIBUTES TO GLOBAL CARBON CYCLE



SUSTAINABLE LIFE CYCLE OF BAMBOO PRODUCTS



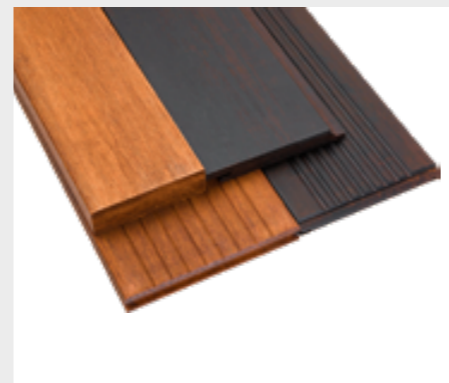
dasso Traditional Bamboo
EPD No.: S-P-01925



dasso Strand Woven Bamboo
EPD No.: S-P-01926



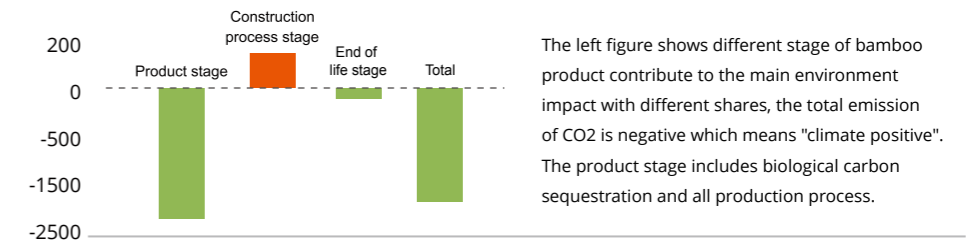
dasso Ecosolid Bamboo
EPD No.: S-P-01927



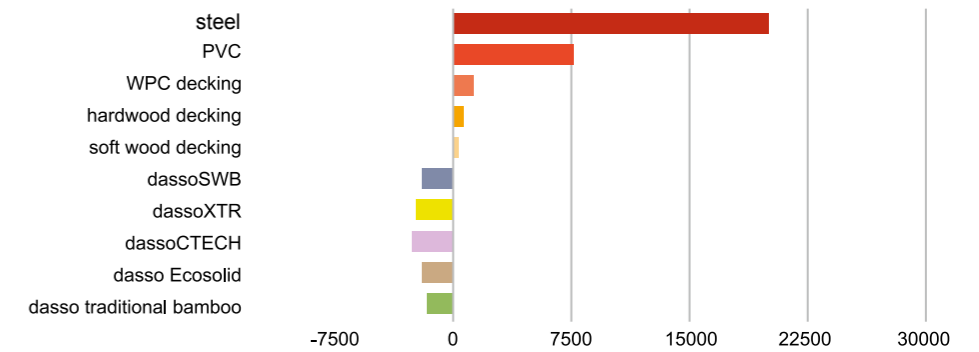
dassoXTR and dassoCTECH
EPD No.: S-P-01928

Dasso bamboo products have been EPD certified, indicating a friendly environmental impact during their entire lifespan (35-40 years).

Carbon footprint in each life stage of bamboo products (kg CO2/M3)

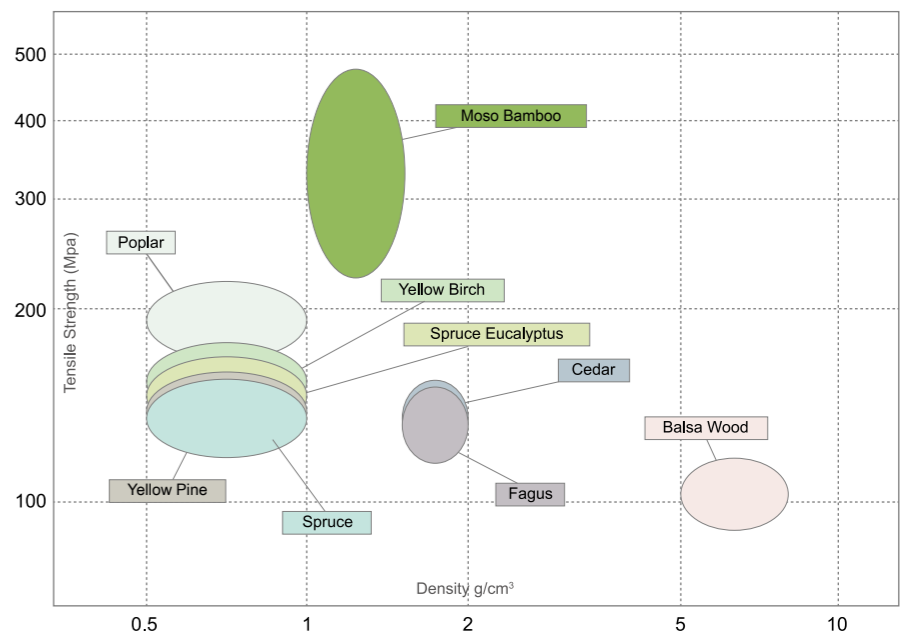


Carbon footprint bamboo VS other material (kg CO2/M3)



Bamboo raw materials have great mechanical properties. They can be processed and made into a variety of products with superior properties that are widely used in various applications and fields.

Material mechanical property comparison between bamboo and wood



*compare to other wood material, bamboo has the highest ratio of intensity/density, has the best mechanical property.

Mechanical property comparison between dasso exterior bamboo board and other exterior wood board

Items	Species	dassoXTR	dassoCTECH	IPE	Merbau	Scots Pine
Density (kg/m3)		1150	1200	1100	815	550
Compressive strength (Mpa)		100	93	90	73.5	42
Janka hardness (N)		16,992	17,659	15,620	7,620	2,420
Modulus of elasticity (MOE) (MPa)		19.1	16.7	22.07	15.93	10.08

After 3 decades of development in bamboo industry, dasso has the most advanced skills, technology (patent owner) and automatic manufacturing equipment. We have gather talented people to develop a management system that focus on production and quality control. This enables Dasso to provide bamboo products with consistent superior quality for all kinds of applications.



dassoFlooring



dassoFurniture



dassoElements



dassoArchitecture



dassoXTR / CTECH



dassoInnovation

LEED v4/v4.1 BD+C assessment criteria with relation to dasso products

Criteria LEED		Aspect	Points	dasso Traditional Bamboo	dasso SWB	dasso Ecosolid Bamboo	dassoXTR	dassoCTECH
Material & Resources	Building product disclosure and optimization -environmental product declaration	EPD	1-2	★	★	★	★	★
	Building product disclosure and optimization - sourcing of raw materials	Responsible sourcing of raw materials	1-2	★	★	★	★	★
	Building product disclosure and optimization - material ingredients	Chemical inventory	1-2					★
Innovation	Innovation	Innovation strategy	1-5			★	★	★



Metro Police Nashville Davidson County-LEED Silver



Vanke Center Shenzhen-LEED Platinum

ABOUT DASSO

Founded in 1993, is the global leader and innovator of the bamboo industry. We provide high quality bamboo products and integrated bamboo solution.



Hangzhou Dasuo Technology Co.,Ltd



Hangzhou Zhuangyi Furniture Co.,Ltd



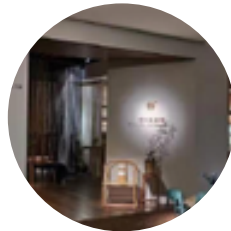
Fujian Dasso Industry Co., Ltd



Zhejiang Daocheng Bamboo Industry Co., Ltd



Jiangxi Zhushang Bamboo Industrial Co.,Ltd



Zhujia Gallery



Zhejiang Xinhaiye Bamboo Technology Co.,Ltd



Shunchang Zhujia Bamboo Industrial Co.,Ltd

dasso China

Add: Xinhe, Linpu, Xiaoshan, Hangzhou, China 311251

Tel: 86.0571.5716.3765

Fax: 86.0571.5716.3700

Email: info@dassoGroup.com

Web: www.dassoGroup.com



dasso USA

Add: 6060 Boat Rock Blvd, Suite 800, Atlanta, GA 30336

Tel: 1.404.691.6872

Fax: 1.404.691.6870

Email: info@dassousa.com

Web: dassoxt.com

