





dasso · bamboo



dasso group, founded in 1993, is the global leader and innovator of the bamboo industry. With over 27 years' history of manufacturing bamboo, dasso now have 8 manufacturing facilities and over 1000 employees, in addition to owning over 2,700 acres of productive, sustainable bamboo forest in China.

dasso has the most advanced crafts, technology and automated manufacturing equipments; we gathered some of the most talented people to develop the most perfect management system for production and quality control, which enable dasso to provide the bamboo products with superior quality and become the most powerful integrated solution provider for bamboo products. dasso offers dassoFLOORING, dassoELEMENTS, dassoXTR®, dassoCTECH® as regular product range.

In addition to conventional products, dasso group cooperates with design institutes and developers in order to provide customized products, such as: the bamboo fire-resistant ceiling of Madrid International Airport; Bamboo acoustic material of Wuxi Grand Theater; special bamboo elements in Culture and Art Center of Fuzhou Strait ... until now, we have completed more than 1,000 projects in more than 40 countries all over the world.



Hangzhou Dasuo Technology Co.,Ltd

Multi-purpose production facility produces 2 million m² per year.



Hangzhou Zhuangyi Furniture Co.,Ltd

Furnishing Plant 400 x 40 FCL container per year.



Fujian Dasso Industry Co., Ltd

It will be in production by February 2020, with an annual production (dassoXTR & dassoCTECH) capacity of 200 million m²,with additional facilities for further expansion.



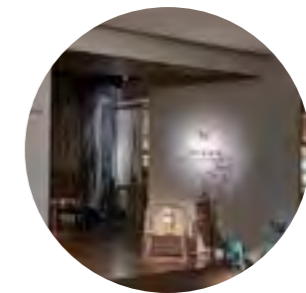
Zhejiang Daocheng Bamboo Industry Co., Ltd

An overseas sales team of dasso bamboo products, whose business is around the world with more than 50 staffs.



Jiangxi Zhushang Bamboo Industrial Co.,Ltd

dassoXTR production facility produces 10 million m² per year.



Zhujia Gallery

Integrated design, development, sales and promotion of green bamboo, original design of bamboo crafts.



Zhejiang Xinhaiye Bamboo Technology Co.,Ltd

dassoXTR production facility produces 500,000 m² per year.



Shunchang Zhujia Bamboo Industrial Co.,Ltd

Multi-purpose production facility produces 2million m² per year.



CONTENT

- Public Architecture
- Stadium & Venues
- Theater
- Museum
- Office & Shopping Mall
- Hospital & Educational
- Hospitality & Resort
- Public Area
- Residential



Madrid Barajas Airport

Location **Madrid / Spain**

Project completion **2004**

Sub-brand **dassoElements**

Quantity **230,000 M²**

Designed by **Richard G. Rogers of Rogers Stirk**



After 15 years



HongKong-Zhuhai-Macao Bridge

Location **China**
project completion **2018**

Sub-brand **dassoXTR**
Quantity **20,000 M²**

Designed by
Hangzhou Landscape Architecture Design Institute





Boao ASIA Forum International Conference Center

Location Hainan / China

Project completion 2017

Sub-brand dassoXTR

Quantity 4,000 M²

Designed by SOM & SWA





Nanjing Youth Olympic Park and Plaza

Location **Jiangsu / China**

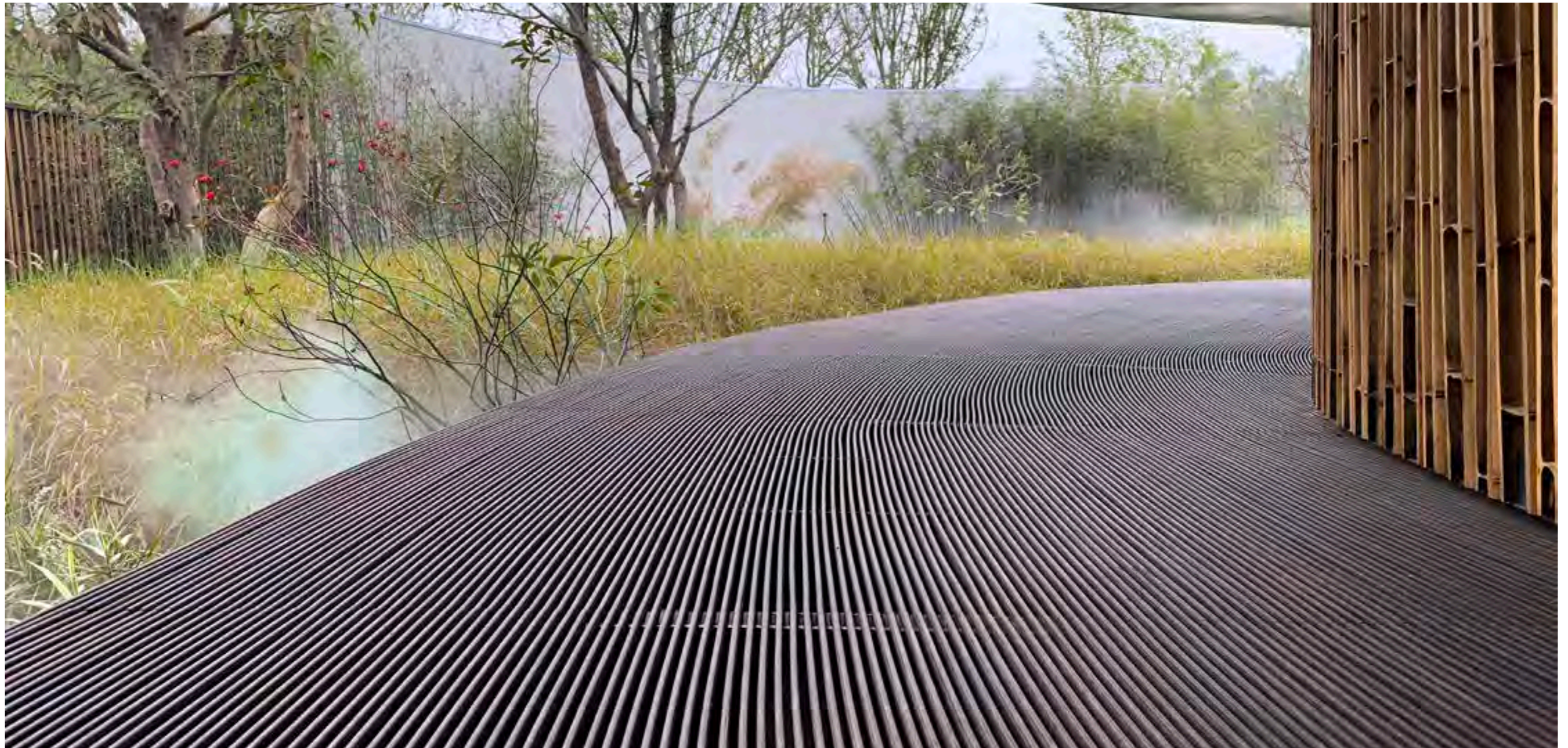
Project completion **2014**

Sub-brand **dassoXTR**

Quantity **30,000 M²**

Designed by **Scott Slaney of SWA Group**





Kunshan Garden in the 12th China (Nanning) International Garden Expo

Location **Guangxi / China**
Project completion **2018**

Sub-brand **dassoXTR / Elements**
Quantity **2,000 M²**

Designed by **Cuikai Studio**





Shanghai World Expo Houtan Park

Location **Shanghai / China**

Project completion **2008**

Sub-brand **dassoXTR**

Quantity **10,000 M²**

Designed by **Yu Kongjian of Turenscape**





Shandong Grand Theatre

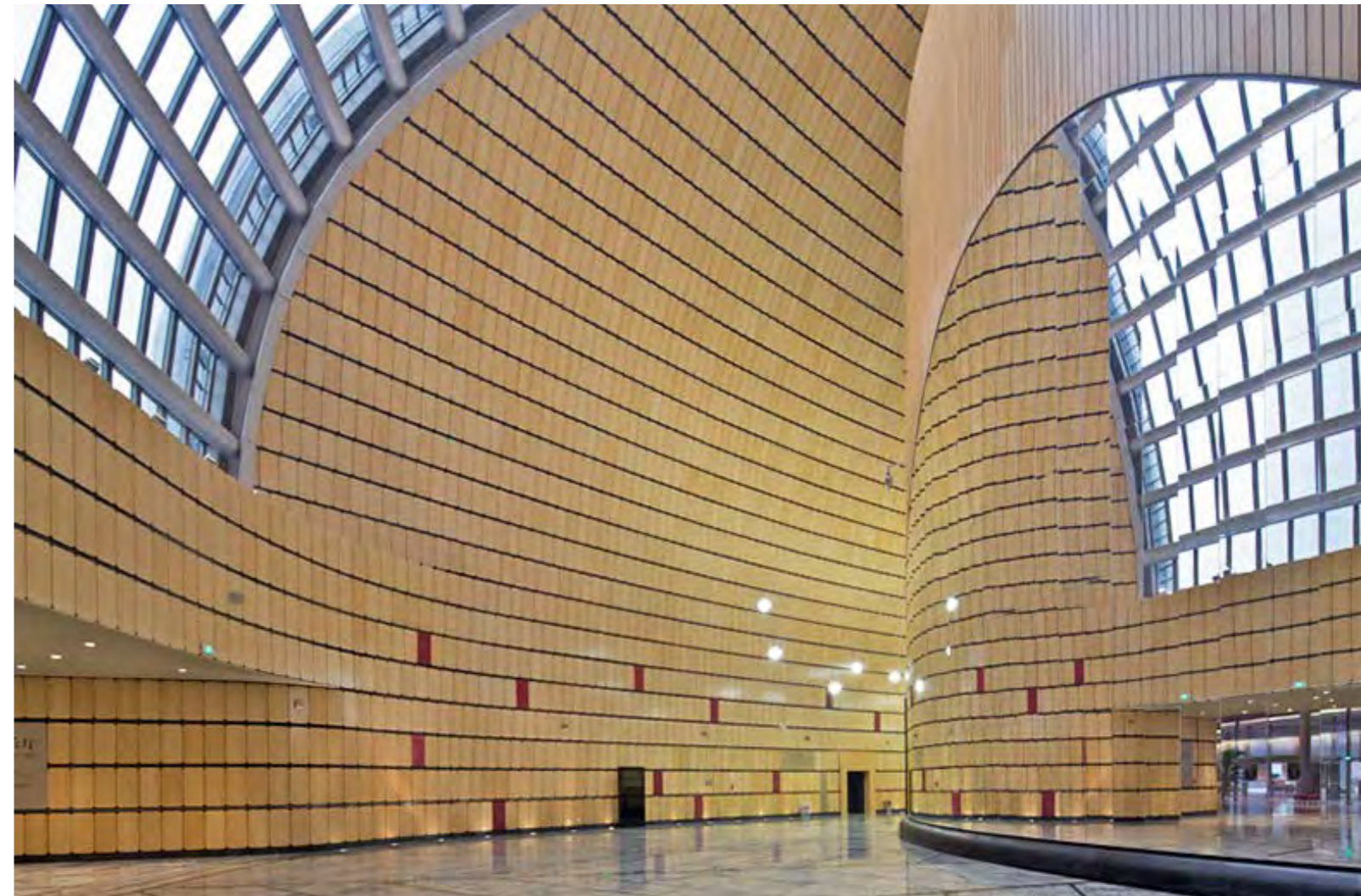
Location **Shandong / China**

Project completion **2012**

Sub-brand **dassoElements**

Quantity **20,000 M²**

Designed by **Paul Andreu Of Paul Andreu architecte paris**





Fuzhou Strait Culture and Art Centre

Location **Fujian / China**

Project completion **2018**

Sub-brand **dassoElements / Flooring / CTECH**

Quantity **28,700 M²**

Designed by **Pekka Salminen of PES-Architects**





Wuxi Grand Theatre

Location **Jiangsu / China**

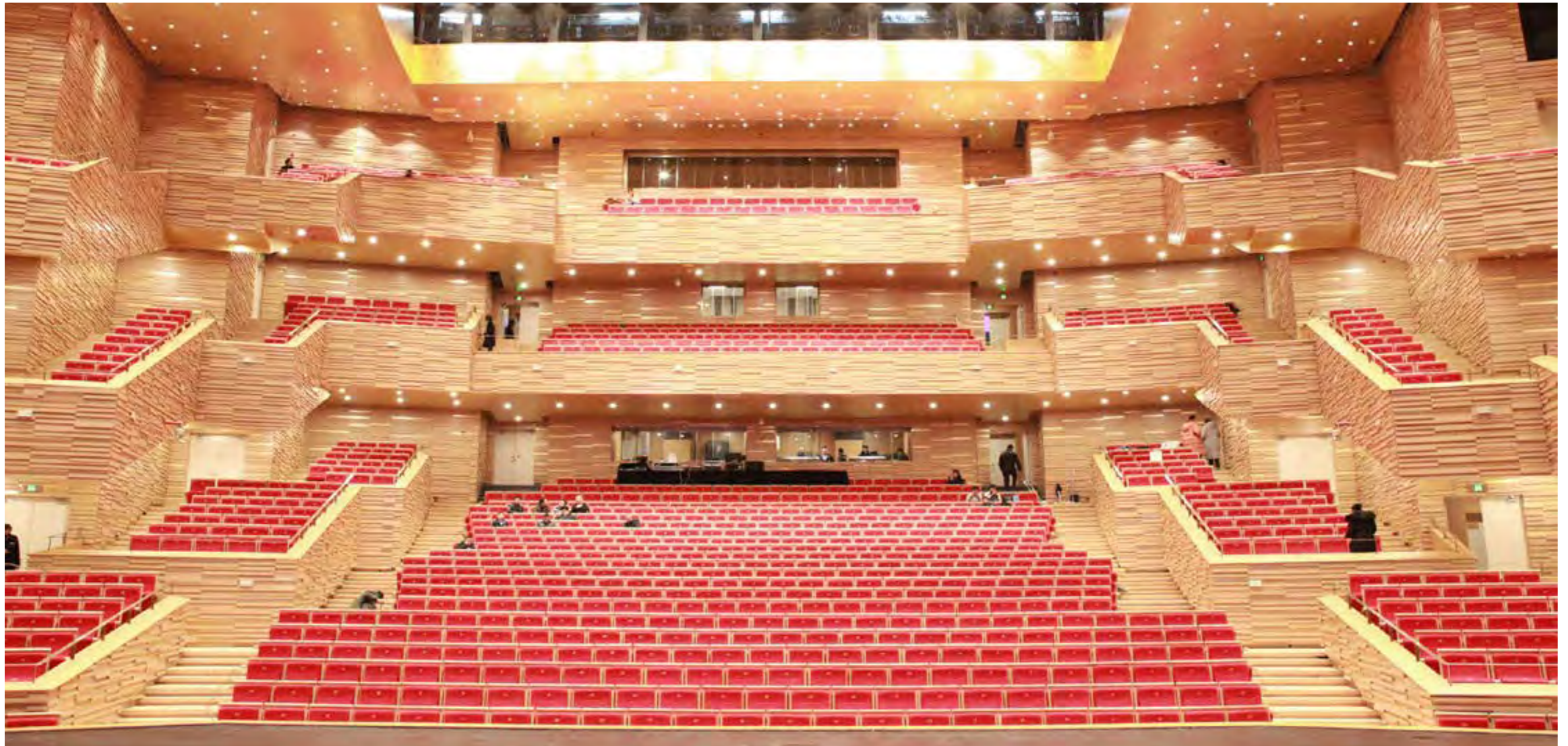
Project Completion **2009**

Sub-brand **dassoElements / XTR / Flooring**

Quantity **12,000 M²**

Designed by **Pekka Salminen of PES-Architects**





Culture and Art Center of Yuhang District

Location **Zhejiang / China**

Project completion **2018**

Sub-brand **dassoFlooring / Elements**

Quantity **4,000 M²**

Designed by

Marco Piva of HENNING LARSEN ARCHITECTS(Architecture)

ZONGLV(Landscape)





Wuxi Yangshan Geological Museum

Location **Jiangsu / China**

Project completion **2011**

Sub-brand **dassoXTR**

Quantity **1,500 M²**

Designed by **Shanghai boyi architectural**





Gongwang Art Museum

Location **Zhejiang / China**

Project completion **2016**

Sub-brand **dassoElements / XTR**

Quantity **3,000 M²**

Designed by **Wang Shu**





Lin'an Museum

Location **Zhejiang / China**

Project completion **2018**

Sub-brand **dassoElements / XTR**

Quantity **5,000 M²**

Designed by **Wang Shu**





Western China International Expo City

Location **Sichuan / China**

Project completion **2016**

Sub-brand **dassoElements**

Quantity **9,600 M²**

Designed by

tvsDesign / CSEEC Southwest Design & Research Institute





Liquor Museum (TUOPAI)

Location **Sichuan / China**

Project completion **2017**

Sub-brand **dassoXTR**

Quantity **4,500 M²**

Designed by **Atelier FCJZ**





NanXun Urban Planning Exhibition Center

Location **Zhejiang / China**

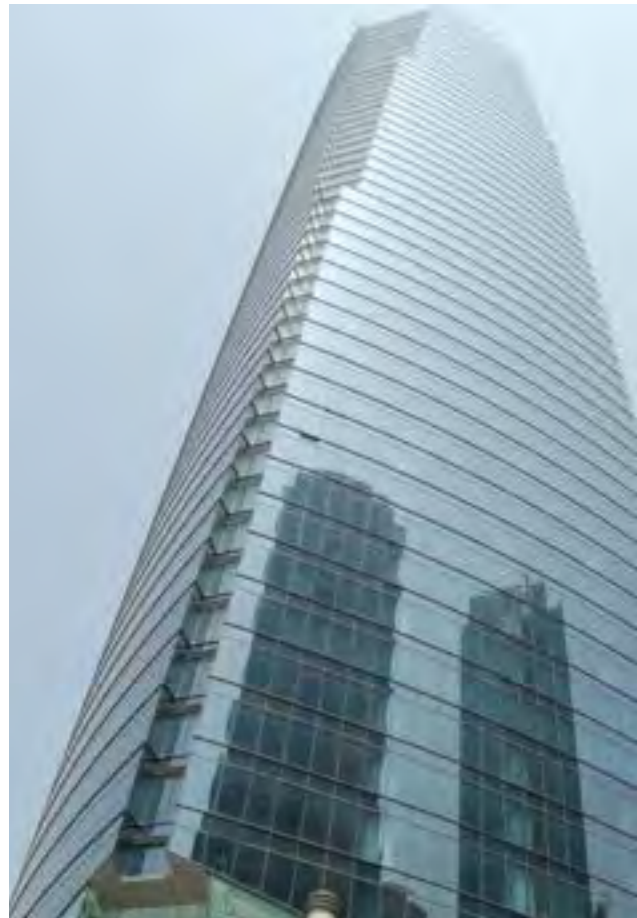
Project completion **2019**

Sub-brand **dassoXTR / CTECH**

Quantity **3,000 M²**

Designed by **Cuikai Studio**





ONE Lujiazui

Location **Shanghai / China**

Project completion **2008**

Sub-brand **dassoElements**

Quantity **2,000M²**

Designed by **Nikken-Corp / Zheng Yi of Shanghai
Zhongjian Architecture Design Institute Co.,Ltd**





Microsoft (China) Shanghai Technology Park

Location **Shanghai / China**

Project completion **2009**

Sub-brand **dassoElements**

Quantity **1,800 M²**

Designed by **B+H Architects**





Vanke Center Shenzhen

Location **Guangdong / China**

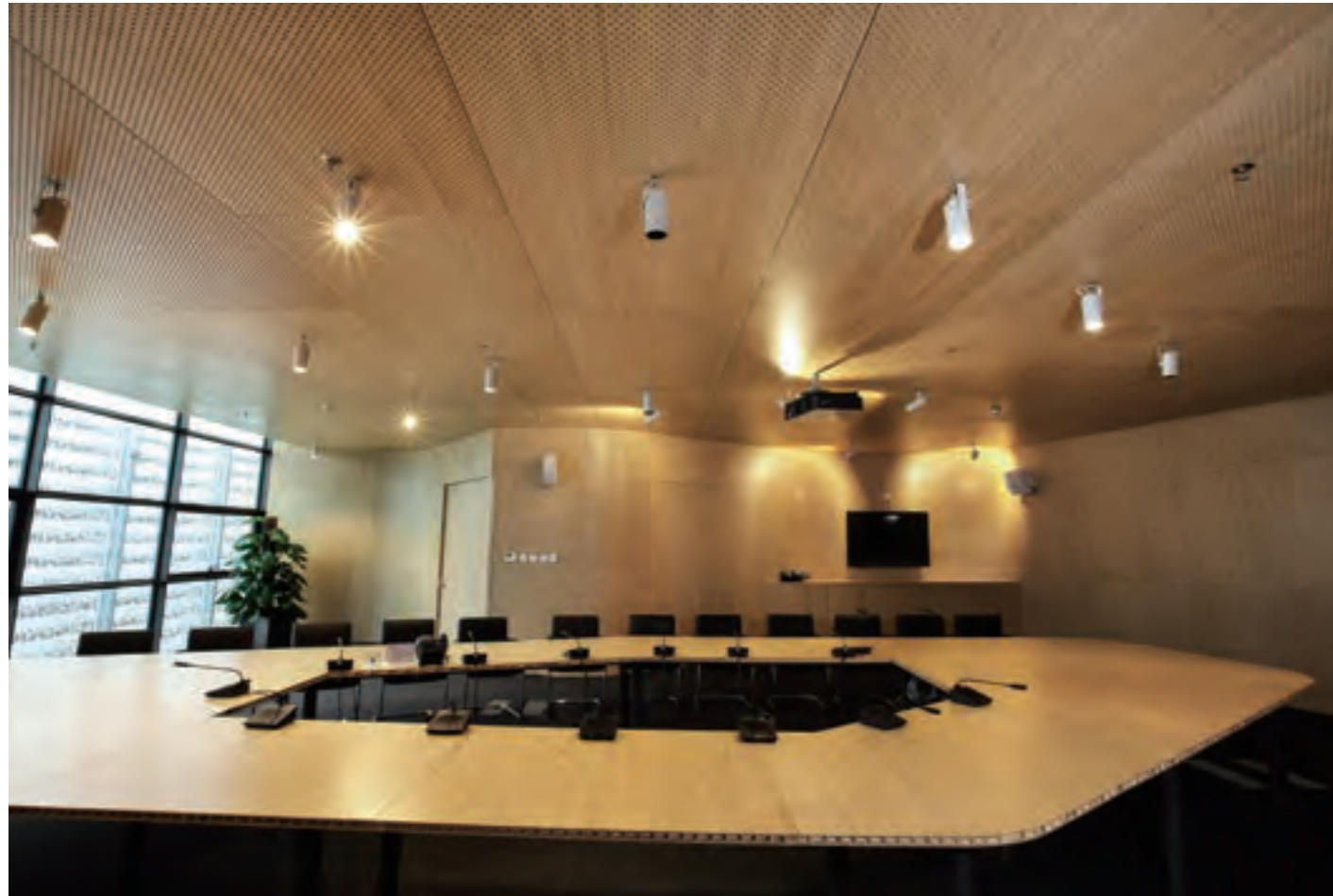
Project completion **2010**

Sub-brand **dassoXTR/Flooring/Elements**

Quantity **21,000 M²**

Designed by **Steven Holl Architects**





Vanke Center Shenzhen

Location **Guangdong / China**

Project completion **2010**

Sub-brand **dassoXTR / Flooring / EElements**

Quantity **21,000 M²**

Designed by **Steven Holl**





Vanke Metropolis in Beijing

Location **Beijing / China**

Project completion **2013**

Sub-brand **dassoXTR**

Quantity **5,000 M²**

Designed by **Neri & Hu**





Embassy of Switzerland in China

Location **Beijing / China**

Project completion **2009**

Sub-brand **dassoElements / XTR / Flooring**

Quantity **1,000 M²**

Designed by **Erich Diserens / Zhang Xi / Yin Xihe EXH Design**





Vanke Times Center

Location **Beijing / China**

Project completion **2018**

Sub-brand **dassoELEMENTS / dassoCTECH**

Quantity **5200 M²**

Designed by **Vanke**





HEX-SYS in Guangzhou

Location **Guangdong / China**

Project completion **2016**

Sub-brand **dassoFlooring / ELelements**

Quantity **5,200 M²**

Designed by **Hu Li / open Architecture**





Tianfu Community

Location **Sichuan / China**
Project completion **2011**

Sub-brand **dassoElements**
Quantity **1,000 M²**

Designed by
Kume Sekkei Design / Yrjo Kukkapuro / Weisa Honklin / Fang Hai





Yingjia Club at Vanke

Location **Beijing / China**

Project completion **2011**

Sub-brand **dassoXTR**

Quantity **20,000 M²**

Designed by **Neri & Hu**





Vanke Emerald Park

Location **Chongqing / China**

Project completion **2019**

Sub-brand **dassoElements / XTR**

Quantity **600 M²**

Designed by **Lacime Architects / YU STUDIO / Jeff Dayu Shi**





Novartis Shanghai Campus Office Building C6

Location **Shanghai / China**

Project completion **2015**

Sub-brand **dassoXTR**

Quantity **15,723 M²**

Designed by **Liu Jiakun** of **Jiakun Architects**





Green Roof Philadelphia

Location **Pennsylvania / USA**

Project completion **2014**

Sub-brand **dassoXTR**

Quantity **450 M²**





Metro Police Nashville Davidson County

Location **Tennessee / USA**

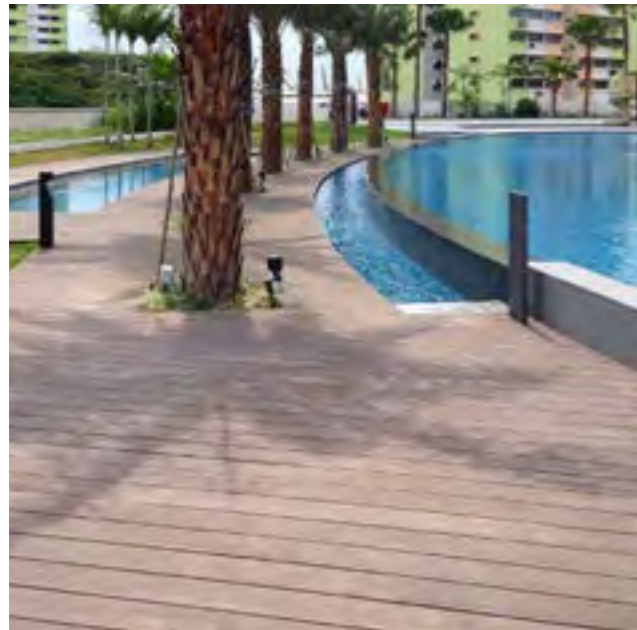
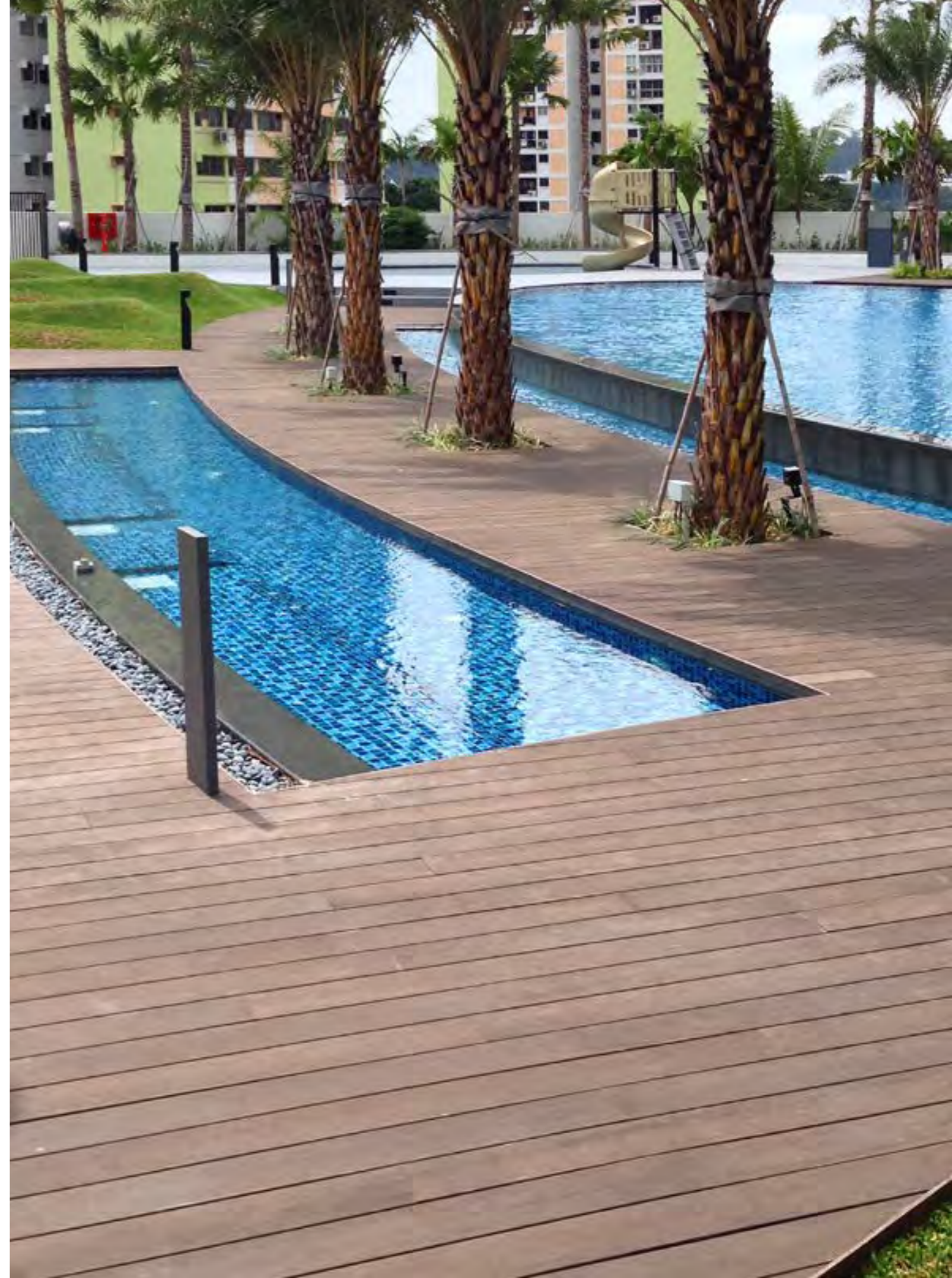
Project completion **2018**

Sub-brand **dassoCTECH**

Quantity **2,300 M²**

Designed by **Hastings Architecture Associates, LLC**





**Spottiwod
(Swimming pool on the rooftop)**

Location **Singapore**

Project completion **2013**

Sub-brand **dassoXTR**

Quantity **3,000 M²**



Fourth & Office

Location TX / USA
Project completion 2017

Sub-brand **dassoXTR**
Quantity 2,300 M²

Designed by
Rommel Sulit of Forge Craft Architecture
Bart Whatley of Delineate Studio





Rizhao International Heart hospital

Location **Shandong / China**

Project completion **2018**

Sub-brand **dassoXTR / Elements / Flooring**

Quantity **6,000 M²**

Designed by **MADA s.p.a.m.**





Qingpu Pinghe School

Location **Shanghai / China**

Project completion **2019**

Sub-brand **dassoElements / CTECH / Flooring**

Quantity **8,900 M²**

Designed by **Hu Li /open Architecture**





Gehua Youth and Cultural Center

Location **Hebei / China**

Project completion **2012**

Sub-brand **dassoXTR**

Quantity **3,000 M²**

Designed by **OPEN Architects**





Tourism College of Zhejiang (Qiandao Lake Campus)

Location **Zhejiang / China**

Project completion **2014**

Sub-brand **dassoXTR**

Quantity **3,000 M²**

Designed by **EGO Design**





National University of Singapore

Location **Singapore**

Project completion **2013**

Sub-brand **dassoElements**

Quantity **13,000 M²**

Designed by **MKPL Architects & sasaki**





Tzu Chi University of Science and Technology

Location **Taiwan / China**

Project completion **2019**

Sub-brand **dassoXTR**

Quantity **200 M²**

Designed by **Hetang Landscape Design Co., Ltd**





Tsingpu Yangzhou Retreat

Location **Jiangsu / China**

Project completion **2017**

Sub-brand **dassoCTECH**

Quantity **1,200 M²**

Designed by **Neri & Hu**





Atlantis Sanya

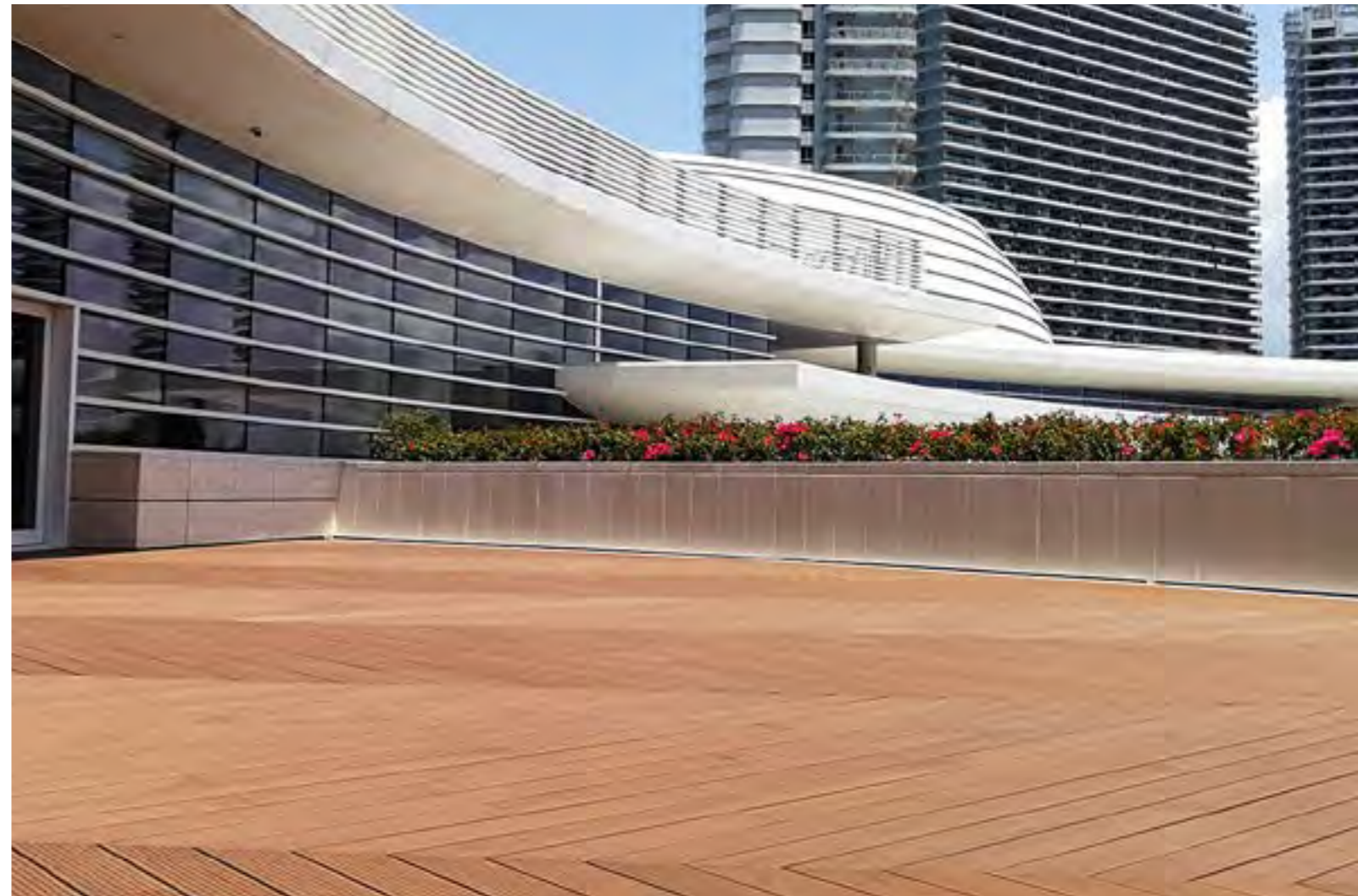
Location Hainan / China

Project completion 2017

Sub-brand **dassoCTECH**

Quantity **20,000 M²**

Designed by **CCD / CHENG CHUNG DESIGN(HK)**





The Sanya Edition

Location **Hainan / China**

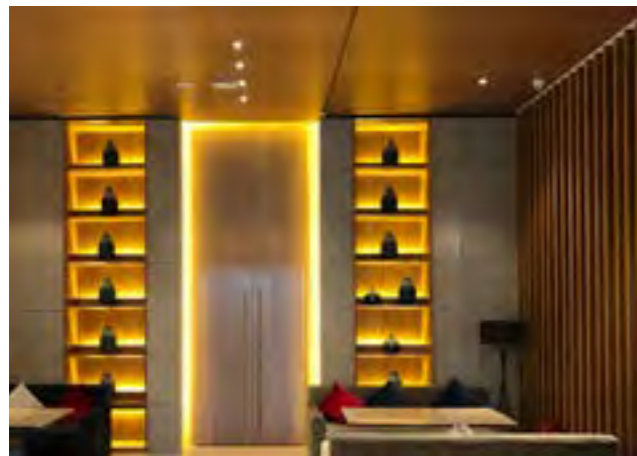
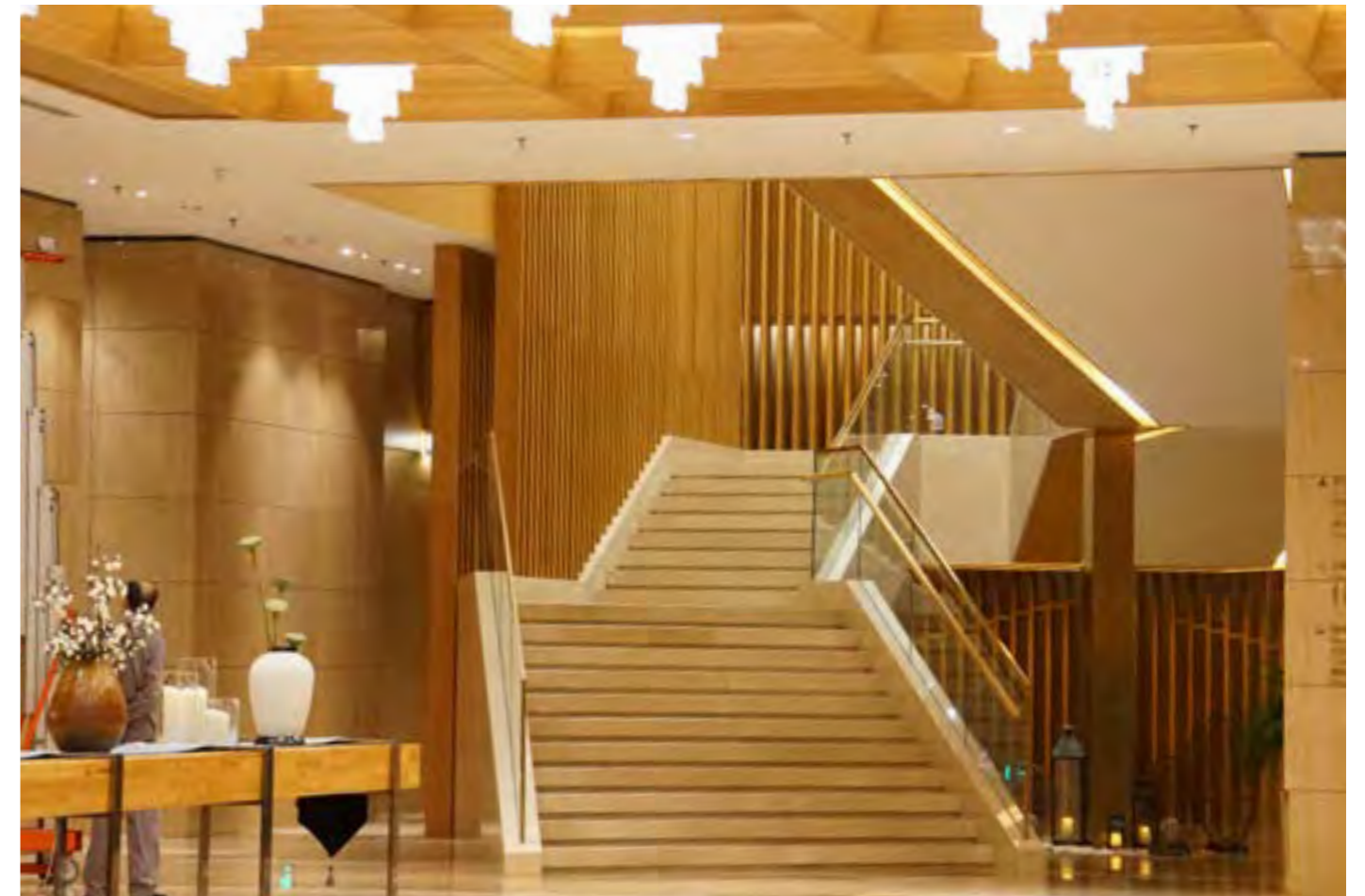
Project completion **2018**

Sub-brand **dassoCTECH**

Quantity **2,980 M²**

Designed by **SWA**





Weihai Guihe Fourseasons Hotel

Location **Shandong / China**

Project completion **2016**

Sub-brand **dassoElements**

Quantity **5,100 M²**

Designed by **Weihai Architects**





Four Season Ocean Courtyard Hotel

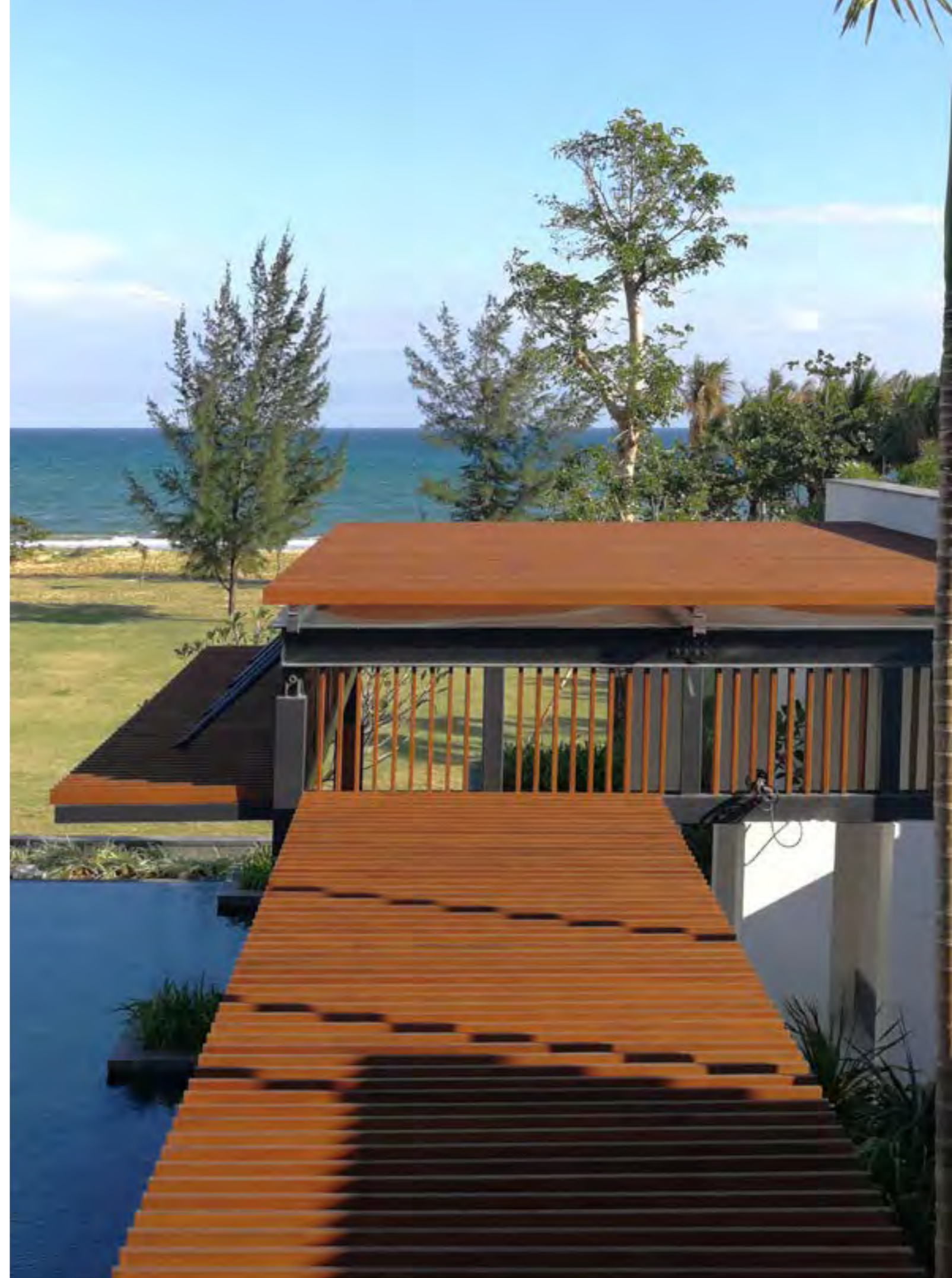
Location **Hainan / China**

Project completion **2018**

Sub-brand **dassoCTECH / XTR**

Quantity **22,000M²**

Designed by **heibrid architecture / Zhouhua Wen**





Ningbo Liangzhu Cultural Park

Location **Ningbo / China**

Project completion **2014**

Sub-brand **dassoXTR**

Quantity **7,000 M²**

Designed by **DC Alliance / The Design Institute of Landscape and Architecture / China Academy of Art**





Xilai Old Town in Chengdu

Location **Sichuan / China**

Project completion **2011**

Sub-brand **dassoXTR**

Quantity **15,000 M²**

Designed by **JiaKun Liu of JIAKUN ARCHITECT**





Jiezi Ancient Town Mei Yi Square

Location **Sichuan / China**

Project completion **2018**

Sub-brand **dassoELEMENTS / XTR**

Quantity **8,000 M²**

Designed by

**Beijing Huaqing An-design Architects Co., Ltd.,
Chengdu Branch**





Six Senses Qing Cheng

Location Sichuan / China

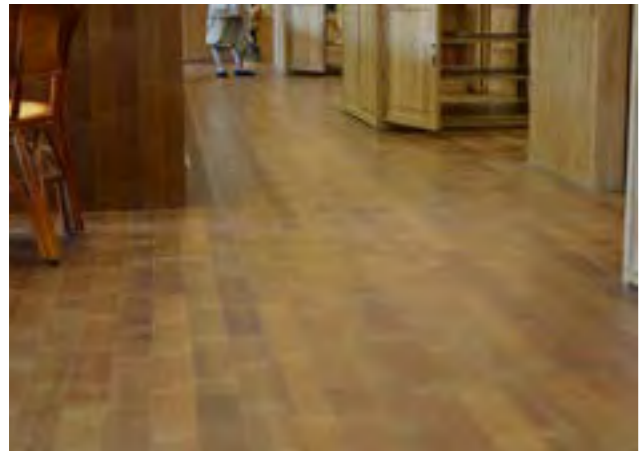
Project completion 2015

Sub-brand dassoFlooring / Elements

Quantity 7,000 M²

Designed by Six Senses Creative Department





Xi Garden

Location **Hainan / China**

Project completion **2013**

Sub-brand **dassoFlooring**

Quantity **400 M²**

Designed by **Wang Weiguang**





Haitang Bay Coastal Walkway

Location **Hainan / China**

Project completion **2015**

Sub-brand **dassoXTR**

Quantity **16,000 M²**

Designed by **China Architecture Design & Research Group**





Changi Civil Club

Location **Singapore**

Project completion **2014**

Sub-brand **dassoXTR**

Quantity **400 M²**

Designed by **DP Architects**





Amata Garden Resort Bagan

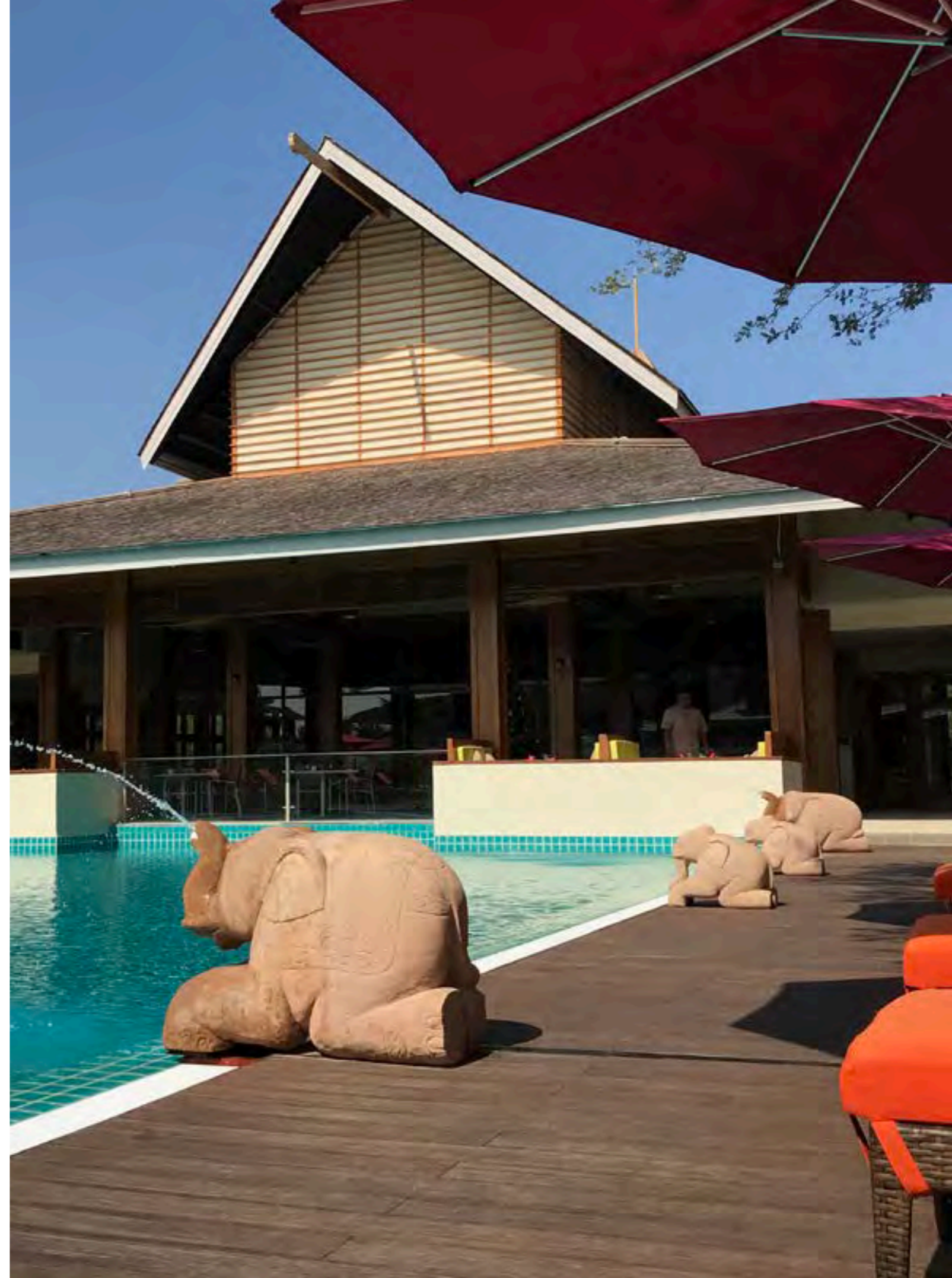
Location **Bagan / Myanmar**

Project completion **2017**

Sub-brand **dassoXTR**

Quantity **870 M²**

Designed by **Victor**





Anantara Hotel and Beach Resort in South Asia

Location **Doha/Vietnam/Malaysia/Thailand/Sri Lanka/Oman**
Project completion **2015-2019**

Sub-brand **dassoXTR**
Quantity **35,000 M²**

Designed by **Design Bube Co.,Ltd**





Qiandao Lake Pearl Square

Location **Hangzhou / China**

Project completion **2013**

Sub-brand **dassoXTR**

Quantity **20,000 M²**

Designed by **AECOM**





Shenjun Mountain

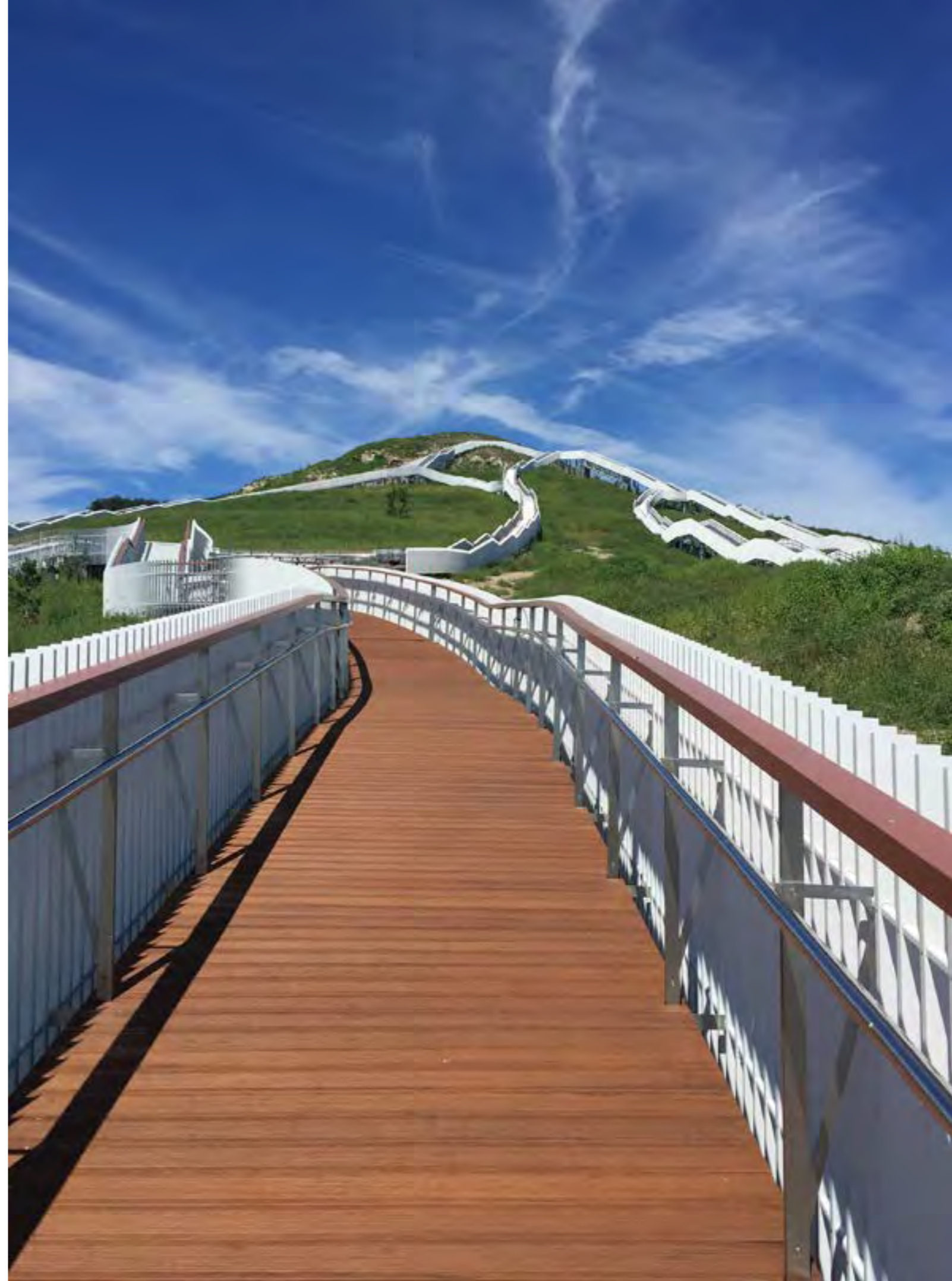
Location **Inner Mongolia / China**

Project completion **2018**

Sub-brand **dassoCTECH**

Quantity **12,000 M²**

Designed by **TuRen Scape**





Changchun Culture of Water Ecology Park

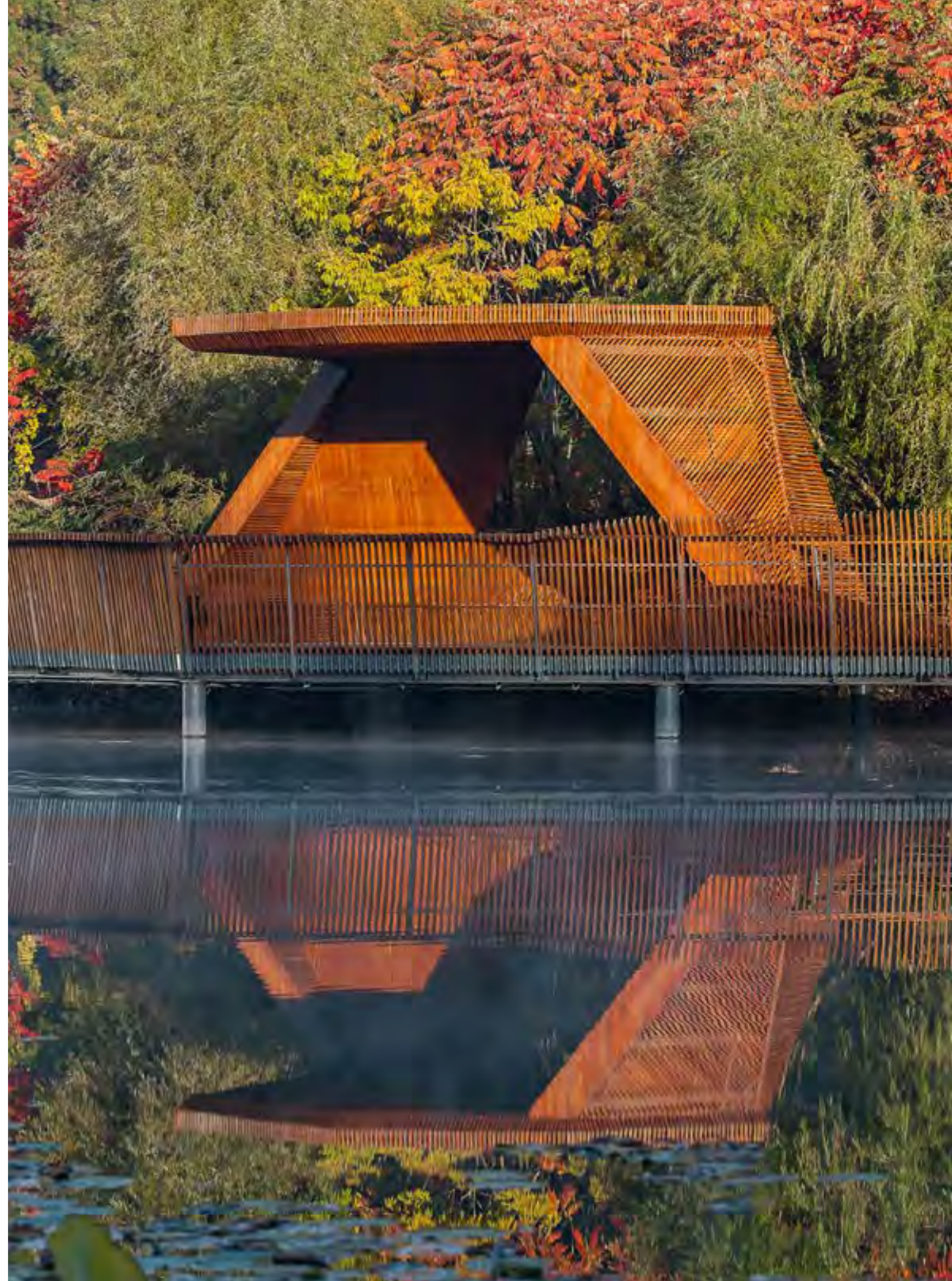
Location **Jilin / China**

Project completion **2018**

Sub-brand **dassoCTECH**

Quantity **20,000 M²**

Designed by **W&R Design**





Greenway in Shenzhen

Location **Guangdong / China**

Project completion **2012**

Sub-brand **dassoXTR**

Quantity **3,000 M²**

Designed by

BLY Landscape and Architecture Planning and Design Institute





KPMG-CCTF Community Centre

Location **Sichuan / China**

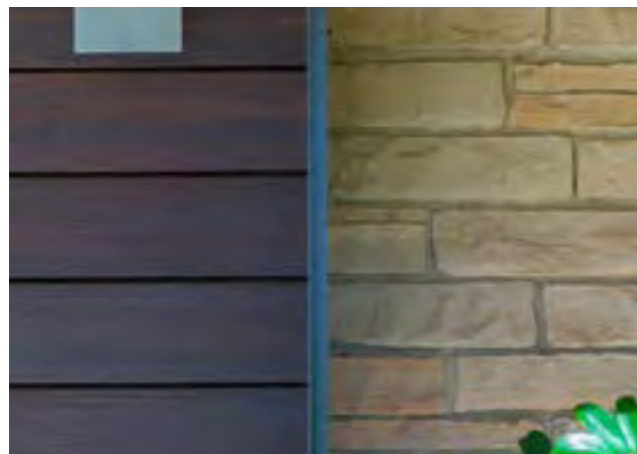
Project completion **2009**

Sub-brand **dassoXTR**

Quantity **500 M²**

Designed by **The Oval Partnership**





Olmos Park

Location **TX / USA**

Project completion **2018**

Sub-brand **dassoXTR**

Quantity **180 M²**

Designed by **Elizabeth D. Haynes**





MOMA Linked Hybrid Beijing

Location **Beijing / China**

Project completion **2009**

Sub-brand **dassoElements / Flooring**

Quantity **15,000 M²**

Designed by **Steven Holl Architects**





Thousand Island Lake Private Villa

District Zhejiang / China

Project completion 2008

Sub-brand **dassoElements** / Flooring

Quantity **400 M²**



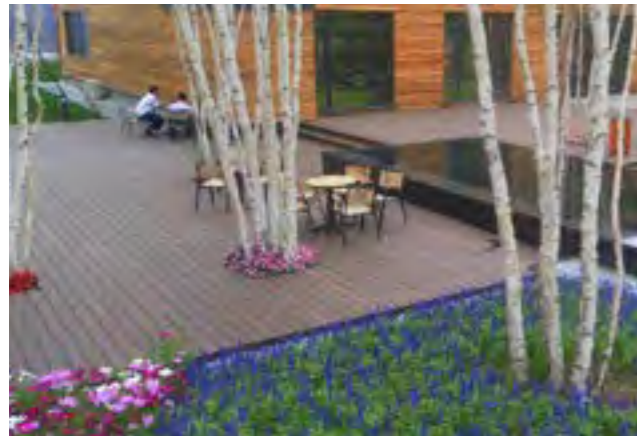


Songhua Lake Ski Resort

Location **Jilin / China**
Project completion **2012**

Sub-brand **dassoXTR**
Quantity **2,000 M²**

Designed by **PlusUrbia (lead) / Brillhart Architecture / Gerardo Valle P. Arquitectos**





Vanke Beijing Changyang World Business Centre

Location **Beijing / China**
Project completion **2014**

Sub-brand **dassoXTR**
Quantity **3,000 M²**

Designed by **Neri & Hu**





Fifth Park of Shanghai Vanke Blue Mountain

Location **Shanghai / China**
Project completion **2010**

Sub-brand **dassoXTR**
Quantity **20,000 M²**

Designed by **Wang Ge of CCDI**





Haleston Row Residence

Location **South Carolina / USA**

Project completion **2016**

Sub-brand **dassoXTR**

Quantity **2,500 M²**

Designed by **Julia Martin of Julia F. Martin Architects**





Valley Hall Deck - Sandy Spring

Location **Atlanta / USA**

Project completion **2019**

Sub-brand **dassoXTR**

Quantity **280 M²**





Merino Crescent

Location **Singapore**

Project completion **2015**

Sub-brand **dassoCTECH**

Quantity **800 M²**

Designed by **HILADT Architects LLP**





Private Villa in Parkistan

Location **Pakistan**
Project completion **2017**

Sub-brand **dassoXTR**
Quantity **120M²**





Private villa

Location **Singapore**
Project completion **2019**

Sub-brand **dassoXTR**
Quantity **115 M²**

Private Villa

Location **Spain**
project completion **2019**

Brand Name **dassoCTECH**
Quantity **186 M²**





Koosen Tera

Location **Tokyo / Japan**
Project completion **2017**

Sub-brand **dassoXTR**
Quantity **200 M²**

Designed by **abanba**



Fortitude Valley

Location **Australian**
Project completion **2019**

Sub-brand **dassoXTR**
Quantity **220 M²**

Designed by **Peppers**





WeiNan DongYuan JiuChengYue

Designed by **DDON**

Vanke Tianfu Cloud City

Designed by **Aedas**







dasso China

Add: Xinhe, Linpu, Xiaoshan, Hangzhou, China 311251

Tel: 86.0571.5716.3765

Fax: 86.0571.5716.3700

Email: info@dassogroup.com

Web: www.dassogroup.com

dasso USA

Add: 6060 Boat Rock Blvd, Suite 800, Atlanta, GA 30336

Tel: 1.404.691.6872

Fax: 1.404.691.6870

Email: info@dassousa.com

Web: dassoxt.com

dasso Group Europe

Add: Dionysiusstrasse 173,47798 Krefeld, Germany